

060189

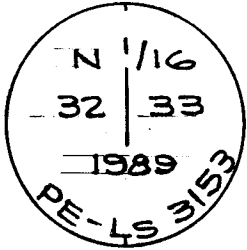
RECEIVED
LARAMIE COUNTY
CHEYENNE, WY.

'89 AUG 2 PM 1 40

CERTIFIED LAND CORNER RECORDATION

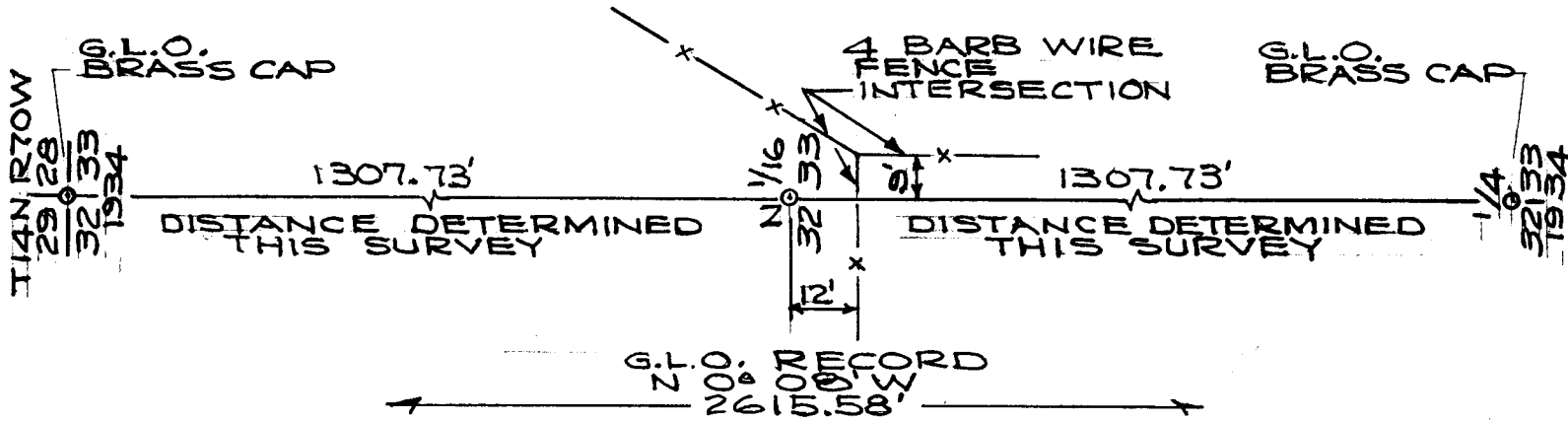
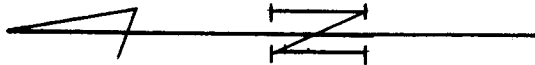
DESCRIPTION OF CORNER EVIDENCE FOUND, AND ORIGINAL RECORD (If known)

DESCRIPTION OF MONUMENT AND ACCESSORIES ESTABLISHED
TO PERPETUATE THE ORIGINAL LOCATION OF THIS CORNER:



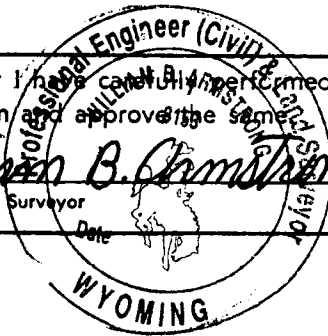
BRASS CAP MARKED AS SHOWN AND SET ON
A 2" x 30" GALV. IRON PIPE WITH TOP DRIVEN
TO WITHIN 6" OF TOP OF GROUND, IN T14N, R70W

SKETCH, WITH COURSE AND DISTANCE TO ADJACENT CORNER IF DETERMINED IN THIS SURVEY.
(May Sketch or Paste Reproduction on Reverse Side.)



I, William B. Armstrong certify that I have personally performed or reviewed the work done on the diagrammed corner as reported on this recordation form and approve the same.

William B. Armstrong P.E.-L.S. 3153
Signature of Surveyor Registration No.



STATE OF WYOMING,

Office of Clerk and Recorder,

County of _____

This "corner record" was filed for record on the _____ day of _____, 19____, was noted on the cross-index plat and is assigned page No. _____, in book No. _____.

County Official

Cross Index No. <u>V 9</u>	T. <u>14</u>	R. <u>70</u>	Mer.
_____	T. _____	R. _____	Mer.
_____	T. _____	R. _____	Mer.
_____	T. _____	R. _____	Mer.
_____	T. _____	R. _____	Mer.
_____	T. _____	R. _____	Mer.
_____	T. _____	R. _____	Mer.
_____	T. _____	R. _____	Mer.